



Meetings And Events

London Hilton on Park Lane hotel

22 Park Lane, London, W1K 1BE, United Kingdom

Tel: +(44)020 7493 8000

International sales office

Tel: +44 (0) 207 856 8202

Conference & Events

events.parklane@hilton.com



[FIND OUT MORE](#)

[SUBMIT ENQUIRY](#)

Stay at the fashionable London Hilton on Park Lane hotel and enjoy 360° views of the city from the 28th-floor Galvin at Windows restaurant. Situated in the heart of Mayfair and overlooking Hyde Park, the hotel was awarded UK Best Business Hotel by Business Traveller Magazine for the second year running in 2009 and England's leading business hotel 2009 by World Travel Awards Europe. Meet colleagues in the Executive Lounge, or hold an event in one of 13 function rooms. The hotel boasts spacious new suites and executive rooms, along with a health club and treatment rooms.



Location

The London Hilton on Park Lane is located on Park Lane, Mayfair and overlooks Hyde Park. The hotel is within walking distance from both Hyde Park Corner and Green Park underground stations. All areas of Central London are easily accessible including the main shopping districts of Knightsbridge, Bond Street and Regent Street.

At a glance

With 13 flexible function rooms, an Executive Lounge, an onsite Business Centre and wireless internet access, the London Hilton on Park Lane is equipped to host a wide range of corporate events.

Meetings Facilities:

- 8 Meeting Rooms
- Largest Room 783.0m²
- 453 Guest Rooms

Hotel Features:

- Wireless in all meeting rooms
- Executive Floor
- Business Centre

Hilton Meetings

Hilton Meetings sets the industry standard for small meetings and offers consistently excellent levels of service, equipment and facilities around the globe. Easy to book, easy to use, Hilton Meetings is your guarantee of high-quality meeting rooms and impeccable business-focused services.



Meetings And Events

Room configuration



1 - First Floor



Total sq. m

Room size

Ceiling Ht.

Maximum number of people per seating style

Classroom	Theatre	Banquet	Reception	Boardroom	U-Shape	H-Shape
250	400	300	0	70	90	0
130	180	260	0	30	45	0
100	140	180	0	30	45	0
80	120	80	0	25	35	0
150	350	300	0	90	90	0
100	150	120	0	70	70	0
550	1000	1100	0	250	250	0
0	0	0	0	0	0	0
25	40	50	0	16	20	0
25	40	50	0	16	20	0

[Grand Ballroom - Section 2](#)

297.0

13.34m x 22.3m

4.75m

[The Wellington Ballroom](#)

308.0

37.47m x 8.23m

4.57m

Wellington - Section 2

159.0

21.2m x 7.49m

4.48m

[Harvest Room](#)

108.0

11.12m x 9.69m

4.57m

[Grand Ballroom - Section 1](#)

291.0

13.07m x 22.3m

4.75m

[Grand Ballroom - Section 3](#)

167.0

7.49m x 22.3m

4.75m

[The Grand Ballroom](#)

783.0

35.1m x 22.3m

4.75m

The Foyer

278.0

33.82m x 8.23m

8.59m

Wellington - Section 1

58.0

7.68m x 7.49m

2.19m

Wellington - Section 3

58.0

7.68m x 7.49m

2.19m

2 - Second Floor



Total sq. m

Room size

Ceiling Ht.

Maximum number of people per seating style

Classroom	Theatre	Banquet	Reception	Boardroom	U-Shape	H-Shape
20	40	40	0	16	15	0
70	90	100	0	35	40	0
120	180	180	0	50	70	0
100	140	140	0	30	50	0

[View floorplan](#)

Hertford

70.0

9.14m x 7.68m

2.19m

[Crystal Palace Suite](#)

150.0

16.45m x 9.14m

2.19m

Coronation and Hertford

170.0

22.39m x 7.59m

2.19m

Coronation

100.0

12.98m x 7.68m

2.19m

4 - Fourth Floor



Total sq. m

Room size

Ceiling Ht.

Maximum number of people per seating style

Classroom	Theatre	Banquet	Reception	Boardroom	U-Shape	H-Shape
0	0	16	0	0	20	0
0	15	12	0	10	0	0
0	0	0	0	16	0	0
25	50	50	0	30	25	0
0	0	12	0	8	0	0
0	20	24	0	20	0	0
0	20	30	0	20	0	0

[Argyll](#)

38.0

8.23m x 4.57m

1.83m

Nelson

16.0

5.22m x 3.09m

2.47m

[Boardroom](#)

25.0

7.68m x 3.2m

2.47m

Serpentine Suite

68.0

10.15m x 6.67m

2.56m

York

13.0

4.75m x 2.83m

2.47m

Spectra

32.0

7.13m x 4.48m

2.47m

Marlborough Suite

35.0

7.77m x 4.48m

2.47m



London Hilton

on Park Lane

Travel should take you places™

Meetings And Events

Conference & Events

Hilton brings a wealth of experience in creating and delivering exceptional events. With our dedicated event expertise and award-winning services, we'll support you from the planning stage to the event day. Whatever the occasion, we'll make sure your event is successful, memorable and hassle free.

Hilton Executive Floor

Complete with outstanding facilities and dedicated service, Hilton Executive Floors have been created specifically in response to your needs. As well as spacious, well equipped executive bedrooms, they incorporate an Executive Lounge, complimentary breakfast, snacks and beverages, and a range of amenities to help you unwind, prepare or entertain in style.

Connectivity at Hilton

Enjoy the freedom to choose when and where you want to work online. Whether catching up with emails in the comfort of your guest room or counting on secure, reliable connectivity for your meetings and conferences, we provide you with everything you need to stay connected.



Meetings And Events

Grand Ballroom - Section 2

Reopened in November 1994, the Grand Ballroom has become one of the capital's most elegant and technologically advanced venues as well as one of its largest, with a capacity of up to 1100 guests. The Ballroom's superb proportions enable you either to enhance the existing look of the Ballroom or to transform it completely to a theme of your choice with special sets and lighting fixtures that include crystal chandeliers. The ballroom also features a sound system, 3 phase power and air conditioning to help aid your event. For any successful, large-scale event, the Grand Ballroom is the only location in London to consider. However, if you want the exclusivity and ambience of the Grand Ballroom for a smaller audience, then consider The Ballroom section 2. This section will comfortably accommodate up to 400 guests and features the same technical amenities and luxury facilities as the full ballroom.

Overview

Maximum capacity: 400

Dimensions

13.34m x 22.3m x 4.75m
43.77ft x 73.16ft x 15.58ft

Access size

2.3m x 1.5m / 7.55ft x 4.92ft (WxH)

Area

297.0m²
3195.72m²

Lighting






Dimmer lighting, crystal chandeliers and blackout facilities.

Located on

1 - First Floor



Layout and number of people

-  Classroom - 250
-  U-Shape - 90
-  Theatre - 400
-  Banquet - 300
-  Boardroom - 70



Meetings And Events

The Wellington Ballroom

The Wellington Ballroom is conveniently located on the first floor and is fully accessible. The room is integrated with 3 phase power, sound system and air conditioning to help assist all your event needs. With spectacular views looking over Park Lane and Hyde Park, the beautiful chandelier lit Wellington Ballroom is an excellent venue choice. The Ballrooms panoramic windows and sumptuous surroundings lend it to staging high-class conferences and celebrations for up to 200 people. If you are looking for an elegant venue which is integrated with an array of technical wizardry, look no further.

Overview

Maximum capacity: 260

Dimensions

37.47m x 8.23m x 4.57m
122.93ft x 27.0ft x 14.99ft

Access size

2.2m x 1.7m / 7.22ft x 5.58ft (WxH)

Area

308.0m²
3314.08m²

Lighting

Dimmer lighting, crystal chandeliers, natural daylight and blackout facilities.

Located on

1 - First Floor



Layout and number of people



Classroom - 130



U-Shape - 45



Theatre - 180



Banquet - 260



Boardroom - 30



Meetings And Events

Harvest Room

The Harvest room is located on the first floor, is fully accessible and integrated with air conditioning, versatile lighting and a sound system. Apart from its modern fixtures the room has a lofty ceiling with a hand painted Mural that helps to lend great style and elegance to the Harvest Room. The room can accommodate up to 80 people theatre style and as little as 30 for boardroom meetings. The Harvest room is worth considering for any style of successful event and with its proximity to the grand ballroom, it can provide the most excellent setting for a VIP gathering who are attending a larger function.

Overview

Maximum capacity: 120

Dimensions

11.12m x 9.69m x 4.57m
36.48ft x 31.79ft x 14.99ft

Access size

2.35m x 2.3m / 7.71ft x 7.55ft (WxH)

Area

108.0m²
1162.08m²

Lighting

Dimmer lighting.

Located on

1 - First Floor



Layout and number of people



Classroom - 80



U-Shape - 35



Theatre - 120



Banquet - 80



Boardroom - 25



Meetings And Events

Grand Ballroom - Section 1

Reopened in November 1994, the Grand Ballroom has become one of the capital's most elegant and technologically advanced venues as well as one of its largest, with a capacity of up to 1100 guests. The Ballroom's superb proportions enable you either to enhance the existing look of the Ballroom or to transform it completely to a theme of your choice with special sets and lighting fixtures that include crystal chandeliers. The ballroom also features a sound system, 3 phase power and air conditioning to help aid your event. For any successful, large-scale event, the Grand Ballroom is the only location in London to consider. However, if you want the exclusivity and ambience of the Grand Ballroom for a smaller audience, then consider The Ballroom section 1. This section will comfortably accommodate up to 350 guests and features the same technical amenities and luxury facilities as the full ballroom.

Overview

Maximum capacity: 350

Dimensions

13.07m x 22.3m x 4.75m
42.88ft x 73.16ft x 15.58ft

Access size

2.3m x 1.5m / 7.55ft x 4.92ft (WxH)

Area

291.0m²
3131.16m²

Lighting






Dimmer lighting, crystal chandeliers and blackout facilities.

Located on

1 - First Floor



Layout and number of people

-  Classroom - 150
-  U-Shape - 90
-  Theatre - 350
-  Banquet - 300
-  Boardroom - 90



Meetings And Events

Grand Ballroom - Section 3

Reopened in November 1994, the Grand Ballroom has become one of the capital's most elegant and technologically advanced venues as well as one of its largest, with a capacity of up to 1100 guests. The Ballroom's superb proportions enable you either to enhance the existing look of the Ballroom or to transform it completely to a theme of your choice with special sets and lighting fixtures that include crystal chandeliers. The ballroom also features a sound system, 3 phase power and air conditioning to help aid your event. For any successful, large-scale event, the Grand Ballroom is the only location in London to consider. However, if you want the exclusivity and ambience of the Grand Ballroom for a smaller audience, then consider The Ballroom section 3. This section will comfortably accommodate up to 150 guests and features the same technical amenities and luxury facilities as the full ballroom.

Overview

Maximum capacity: 150

Dimensions

7.49m x 22.3m x 4.75m
24.57ft x 73.16ft x 15.58ft

Access size

2.3m x 1.5m / 7.55ft x 4.92ft (WxH)

Area

167.0m²
1796.92m²

Lighting





Dimmer lighting, crystal chandeliers and blackout facilities.

Located on

1 - First Floor



Layout and number of people

-  Classroom - 100
-  U-Shape - 70
-  Theatre - 150
-  Banquet - 120
-  Boardroom - 70



Meetings And Events

The Grand Ballroom

Reopened in November 1994, the Grand Ballroom has become one of the capital's most elegant and technologically advanced venues as well as one of its largest. The Ballroom's superb proportions enable you either to enhance the existing look of the Ballroom or to transform it completely to a theme of your choice with special sets and lighting fixtures that include crystal chandeliers. The ballroom also features a sound system, 3 phase power and air conditioning to help aid your event. For any successful, large-scale event, the Grand Ballroom is the only location in London to consider. However, if you want the exclusivity and ambience of the Grand Ballroom for a smaller audience, this flexible venue can be sub-divided to cater for events as small as 70 through to 400 people in size.

Overview

Maximum capacity: 1100

Dimensions

35.1m x 22.3m x 4.75m
115.16ft x 73.16ft x 15.58ft

Access size

2.3m x 1.5m / 7.55ft x 4.92ft (WxH)

Area

783.0m²
8425.08m²

Lighting

Dimmer lighting, crystal chandeliers and blackout facilities.

Located on

1 - First Floor



Layout and number of people



Classroom - 550



U-Shape - 250



Theatre - 1000



Banquet - 1100



Boardroom - 250



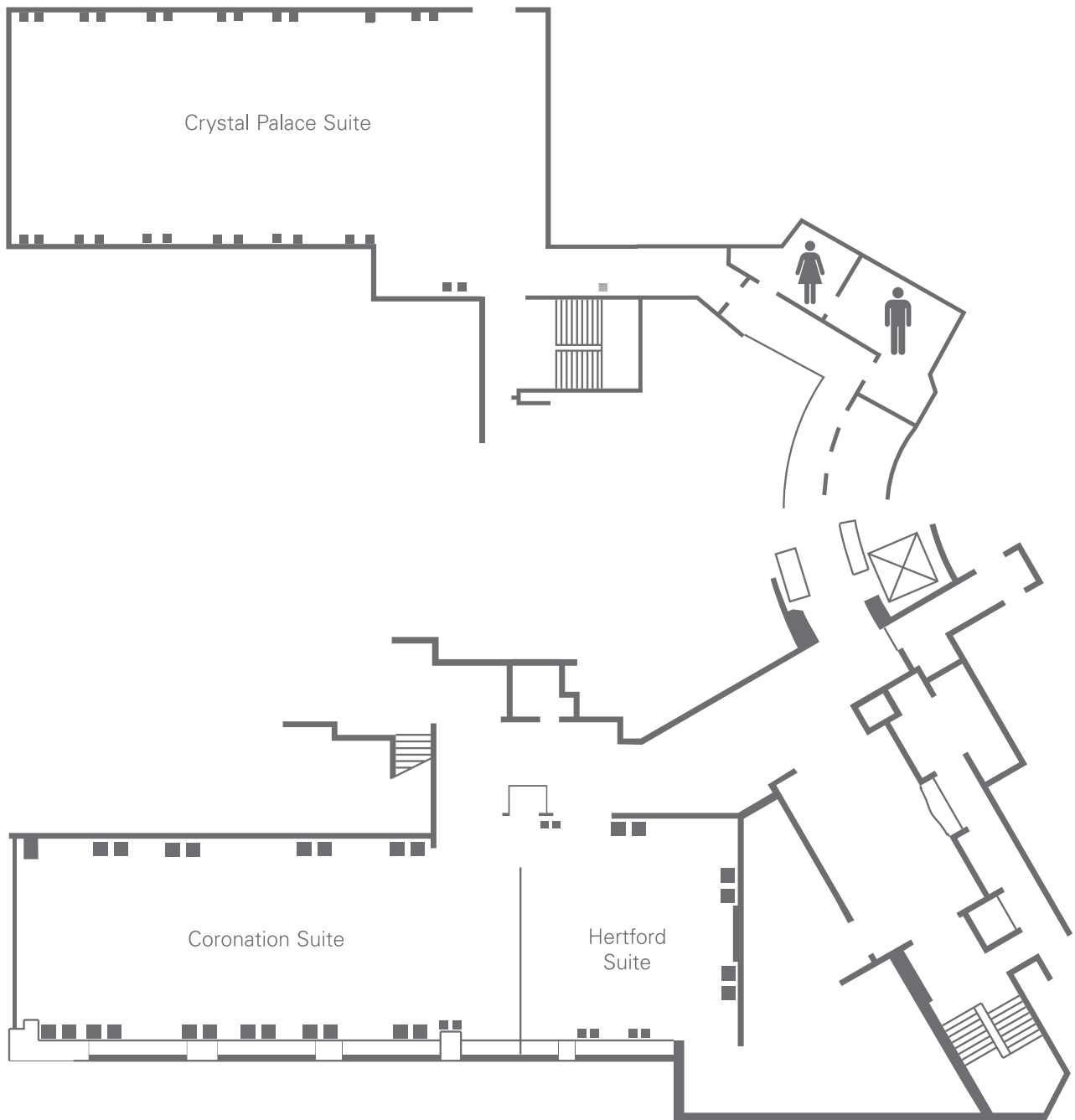
London Hilton

on Park Lane

Travel should take you places™

Meetings And Events

2 - Second Floor





Meetings And Events

Crystal Palace Suite

Named after Joseph Paxton's magnificent glass and steel pavilion built for the Great Exhibition of 1851. The room can accommodate between 40 and 100 people for a variety of different events. The room is very bright in the day due to the natural light it receives; but in the evening, candle light transforms the room into a fairytale setting perfectly suited to elegant private dinners. The option of a small dance floor to complement the integrated sound system have been successful options for previous dinner dance events for 80 people. For a memorable event, in a prestigious area of London, look no further than the Crystal Palace room.

Overview

Maximum capacity: 100

Dimensions

16.45m x 9.14m x 2.19m
53.97ft x 29.99ft x 7.19ft

Access size

2.0m x 1.38m / 6.56ft x 4.53ft (WxH)

Area

150.0m²
1614.0m²

Lighting

Dimmer lighting, natural daylight and blackout facilities.

Located on

2 - Second Floor



Layout and number of people



Classroom - 70



U-Shape - 40



Theatre - 90



Banquet - 100



Boardroom - 35



Meetings And Events

Argyll

Simply decorated, the Argyll room is a small and intimate meeting room located on the 4th floor of the building.

Overview

Maximum capacity: 20

Dimensions

8.23m x 4.57m x 1.83m
27.0ft x 14.99ft x 6.0ft

Area

38.0m²
408.88m²

Lighting

Natural daylight

Located on

4 - Fourth Floor



Layout and number of people



U-Shape - 20



Banquet - 16



Meetings And Events

Boardroom

The Boardroom is specifically designed to accommodate 16 executives. Air conditioning and flexible lighting help create the perfect environment. The fourth floor meeting room can also be adapted to provide guests with private dining and corporate hospitality of the highest standard.

Overview

Maximum capacity: 16

Dimensions

7.68m x 3.2m x 2.47m

25.2ft x 10.5ft x 8.1ft

Access size

2.14m x 0.78m / 7.02ft x 2.56ft (WxH)

Area

25.0m²

269.0m²

Lighting

Dimmer lighting and natural daylight.

Located on

4 - Fourth Floor



Layout and number of people



Boardroom - 16



London Hilton

on Park Lane

Travel should take you places™

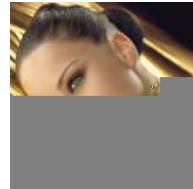
Meetings And Events

Leisure Facilities



Purity Mind & Body

Soothe away your stress with a relaxing massage or beauty treatment at the London Hilton on Park Lane hotel's Purity Mind & Body.



Spa & Hairdressing Salon

Treat yourself to a stunning new style at the London Hilton on Park Lane hotel's Ladies Hairdresser and Gents' Barber.



Hilton Connections

Get down to work and check your emails on your laptop at the London Hilton on Park Lane hotel, with wireless internet access in public areas.



Health and fitness

Maintain your fitness regime with a workout in the gym at the London Hilton on Park Lane hotel. Relax in the sauna or indulge yourself with a massage and beauty treatment.



Executive Lounge

Take the stress out of your trip and get down to business in the London Hilton on Park Lane hotel's Executive Lounge with WiFi internet access and all day complimentary snacks & drinks.



London attractions

The Concierge desk at the London Hilton on Park Lane hotel is ready to help plan your visits to London attractions like the Houses of Parliament.